

**MAKES  
UP TO 24  
GALLONS**

**GARDEN TECH**

# Sevin®

## Concentrate

### BUG KILLER



**Japanese  
Beetles**



**Cabbage  
Worms**



**Ticks**



**Ants**

**Kills Over 100 Insects on  
Vegetables, Fruits, Ornamentals & Lawns**

Net Contents  
16 fl. oz. (355 ml)

ACTIVE INGREDIENT:  
Carbaryl (1-naphthyl N-methylcarbamate)..... 22.5% by wt.  
INERT INGREDIENTS: ..... 77.5% by wt.

EPA Reg. No. 264-334-71004

EPA Est. No. 67572-GA-1

**KEEP OUT OF REACH  
OF CHILDREN  
CAUTION**

See Back Panel For Precautionary Statements

**Sevin**

**Concentrate  
BUG KILLER**

**For Vegetable Bugs**



Grubs, Alfalfa Caterpillar, Armyworm, Cucumber Beetles, Cutworms, Flea Beetles, Green Cloverworm, Japanese Beetle, Lace Bugs, Leafhoppers, Squash Bugs, Sweet Potato Weevil, Thrips, Tomato Fruitworm, Tomato Hornworm, Tomato Pinworm, Tortoise Beetles, Webworms, & many more listed inside.

**For Lawn Bugs**



Fleas, Ants, Grubs, Armyworms, Centipedes, Chiggers, Cutworms, Earwigs, Essex Skipper, European Chafer, Fall Armyworm, Fiery Skipper, Grasshoppers, Green June Beetle Larvae, Leafhoppers, Lucerne Moth, Millipedes, Mosquitoes (adults), Japanese Beetle, Sawbugs, Spittlebugs, Springtails, Ticks, Yellowstriped Armyworm & many more listed inside.

**For Ornamental Bugs**



Ticks, Ants, Azalea Leafminer, Blister Beetle, Brown Tail Moth, Cutworms, Elm Leaf Aphid, Eriophyid Mites, Fall Armyworm, Fuller Rose Beetle, Plant Bugs, Scale Insects (Crawlers), Tent Caterpillars & many more listed inside.

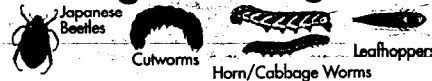
Peel Back Tab for Additional Information

Distributed by:  
TechPac, LLC  
P.O. Box 24830  
Lexington, KY 40504



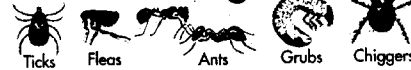
# GARDENTECH® Sevin Concentrate BUG KILLER

## For Vegetable Bugs



Alfalfa Caterpillar, Armyworm, Cucumber Beetles, Cutworms, Flea Beetles, Green Cloverworm, Japanese Beetle, Lace Bugs, Leafhoppers, Squash Bugs, Sweet Potato Weevil, Thrips, Tomato Fruitworm, Tomato Hornworm, Tomato Pinworm, Tortoise Beetles, Webworms, & many more listed inside.

## For Lawn Bugs



Fleas, Ants, Grubs, Armyworms, Centipedes, Chiggers, Cutworms, Earwigs, Essex Skipper, European Chafer, Fall Armyworm, Fiery Skipper, Grasshoppers, Green June Beetle Larvae, Leafhoppers, Lucerne Moth, Millipedes, Mosquitoes (adults), Japanese Beetle, Sowbugs, Spittlebugs, Springtails, Ticks, Yellowstriped Armyworm & many more listed inside.

## For Ornamental Bugs



Ticks, Ants, Azalea Leafminer, Blister Beetle, Brown Tail Moth, Cutworms, Elm Leaf Aphid, Eriophyid Mites, Fall Armyworm, Fuller Rose Beetle, Plant Bugs, Scale Insects (crawlers), Tent Caterpillars, & many more listed inside.

Peel Back Tab for Additional Information

Distributed by:  
TechPac, LLC  
P.O. Box 24830  
Lexington, KY 40504



## KEEP OUT OF REACH OF CHILDREN CAUTION

### STATEMENT OF PRACTICAL TREATMENT

Carbaryl is an N-Methyl Carbamate Insecticide.

**IF SWALLOWED:** Never give anything by mouth to an unconscious or convulsing person. If conscious and not convulsing, drink 1 to 2 glasses of water and induce vomiting by touching the back of the throat with finger. Get medical attention.

**IF IN EYES:** Flush eyes with plenty of water. Get medical attention if irritation persists.

**IF ON SKIN:** Wash thoroughly with soap and water.

**IF INHALED:** Move from contaminated atmosphere and call a physician.

#### GENERAL

Contact a physician immediately in all cases of suspected poisoning. Transport to a physician or hospital immediately and SHOW A COPY OF THIS LABEL TO THE PHYSICIAN. If poisoning is suspected in animals, contact a veterinarian.

#### ANTIDOTE STATEMENT

ATROPINE SULFATE IS HIGHLY EFFECTIVE AS AN ANTIDOTE. See NOTE TO PHYSICIAN.

#### NOTE TO PHYSICIAN

Carbaryl is an N-methyl carbamate insecticide, which is a cholinesterase inhibitor. Atropine is antidotal. Narcotics and other sedatives should not be used. Further, drugs like 2-PAM (pyridine-2-aldoxime methiodide) are NOT recommended.

Consultation on diagnosis, therapy and analysis can be obtained at all hours by calling 1-800-424-9300.

### PRECAUTIONARY STATEMENTS

#### HAZARDS TO HUMANS (& DOMESTIC ANIMALS)

##### CAUTION

HARMFUL IF SWALLOWED, ABSORBED THROUGH THE SKIN, INHALED, OR IF IN EYES. Avoid breathing vapors or spray mist. Avoid contact with eyes, skin or clothing. Keep out of reach of children and domestic animals.

#### USER SAFETY REQUIREMENTS

- Wear long-sleeved shirt, long pants, shoes plus socks and household latex or rubber gloves when mixing and applying this product.
- Wear a hat and eye protection when making overhead applications.
- Remove clothing immediately if pesticide soaks clothing. Change clothing as soon as possible after use.

(continued)

#### USER SAFETY REQUIREMENTS (continued)

- Wash the outside of gloves before removing. As with any pesticide product, wash hands thoroughly immediately after handling and before eating, smoking or using the toilet.
- Avoid contamination of food and feed.
- Do not allow children or pets to contact treated area until sprays have dried.

#### ENVIRONMENTAL HAZARDS

This product is extremely toxic to aquatic and estuarine invertebrates. For terrestrial uses, do not apply directly to water, or to areas where surface water is present or to intertidal areas below the mean high water mark. Do not apply when weather conditions favor drift from area treated. Do not contaminate water by cleaning equipment or disposal of wastes. Do not contaminate water when disposing of equipment washwaters.

#### BEE CAUTION: MAY KILL HONEYBEES IN SUBSTANTIAL NUMBERS.

This product is highly toxic to bees exposed to direct treatment or residues on blooming crops and weeds. Do not apply this product or allow it to drift to blooming crops or weeds if bees are visiting the treatment area. Contact your Cooperative Agricultural Extension Service for further information.

#### DIRECTIONS FOR USE

It is a violation of Federal Law to use this product in a manner inconsistent with its labeling.

Read entire label before using this product.

Strictly observe label directions and cautions. Do not apply this product in a way that will contact workers or other persons, either directly or through drift. The area being treated must be vacated by unprotected persons. Keep unprotected persons out of treated areas until sprays have dried. For any requirements specific to your State or Tribe, consult the agency responsible for pesticide regulation.

Shake all containers prior to use. Do not reuse empty containers or measuring devices for other purposes. Apply when insects or damage appear. Repeat as necessary to maintain control, unless spray interval is specified. Apply when air is calm to avoid drift and contact with eyes and skin. Start spraying at the farthest corner of the treatment area and work backward to avoid contact with wet surfaces. Allow spray to dry in treated areas before reentering. For trees taller than 10 feet, consider hiring a licensed professional. Spray thoroughly to wet upper and lower leaf surfaces, stems and branches. Do not repeat applications more than once a week.

#### STORAGE AND DISPOSAL

##### STORAGE

Store unused product in original container only, in cool, dry area out of reach of children and animals, preferably in a locked storage area. Do not store in areas where temperatures frequently exceed 100°F.

### STORAGE AND DISPOSAL (continued)

After use, replace cap on insecticide container. Rinse hose end unit outdoors in clear water. Store insecticide and sprayer assembly in a cool place.

#### PESTICIDE DISPOSAL

Partially filled containers may be disposed of by securely wrapping original container in several layers of newspaper and discarding in trash. Do not contaminate water, food, or feed by storage or disposal. Discard unused pesticide spray mixture in a safe place away from water supplies.

#### CONTAINER DISPOSAL

Do not reuse empty container. Do not reuse hose end sprayer assembly for other purposes. Rinse thoroughly before discarding in trash. Securely wrap both in several layers of newspaper and discard in trash.

### GENERAL CAUTIONS AND RESTRICTIONS

#### PLANT RESPONSE PRECAUTIONS

Application to wet foliage or during periods of high humidity may cause injury to tender foliage.

Do not use on Boston Ivy, Virginia creeper and maidenhair fern as injury may result. Carbaryl may also injure Virginia and sand pines. The use of adjuvants may increase the potential for crop injury to sensitive crops.

**NOTE: Staining may occur on certain surfaces such as stucco, brick, cinder block, wood, fabrics, and carpet. Spray deposits on painted or stained surfaces or finishes (i.e., cars, houses, trailers, boats, etc.) should be immediately removed by washing to prevent discoloration. Avoid applications to surfaces where visible spray residues are objectionable. Staining of fabrics and carpet may be permanent.**

#### ASPARAGUS

For use on Asparagus to control Apache cicada, Asparagus beetle, and Cutworms, apply 1 1/2 to 3 fluid ounces of this product per gallon of water to cover 1000 sq. ft. using the following **SPECIFIC DIRECTIONS:** Repeat applications as necessary up to a total of 3 times prior to harvest or a total of 5 times per crop but not more often than once every 7 days. For cutworm control, this product is most effective against species which feed on the upper portions of the plant - **OR** apply 3 to 6 fluid ounces of this product per gallon of water to cover 1000 sq. ft. using the following **SPECIFIC DIRECTIONS:** Application to ferns or brush growth following harvest of spears. Repeat applications as necessary but not more often than every 7 days. Do not make more than a total of 5 applications per year to spears and ferns combined.

**RESTRICTIONS AND PRECAUTIONS:** Do not apply within 1 day of harvest. Do not apply more than a total of 9 fluid ounces per 1000 sq. ft. before harvest of spears. Do not apply more than a total of 15 fluid ounces per 1000 sq. ft. per year.

**RESTRICTIONS AND PRECAUTIONS:** Do not apply within 3 days of harvest. Do not apply more than a total of 9 fluid ounces per 1000 sq. ft. per crop. Observe plant response precautions.

#### FRUITING VEGETABLES

For use on Tomatoes, Peppers, and Eggplant to control Colorado potato beetle, European corn borer, Fall armyworm, Lace bugs, Stink bugs (suppression), Tarnished plant bug, Thrips (suppression), Tomato fruitworm, Tomato hornworm, and Tomato pinworm, apply 1 1/2 to 3 fluid ounces of this product per gallon of water to cover 1000 sq. ft. **OR** to control Flea beetles and Leafhoppers, apply 3/4 to 1 1/2 fluid ounces of this product per gallon of water to cover 1000 sq. ft. **OR** to control Cutworms, apply 3 fluid ounces of this product per gallon of water to cover 1000 sq. ft. using the following **SPECIFIC DIRECTIONS:** Repeat applications as necessary up to a total of 7 times but not more often than once every 7 days. Thorough coverage is essential to effectively suppress stink bugs. When disease transmission is suspected, monitor fields following application and retreat if reinfestation occurs but not more often than once every 7 days. For cutworm control, this product is most effective against species which feed on the upper portions of the plant.

**RESTRICTIONS AND PRECAUTIONS:** Do not apply within 3 days of harvest. Do not apply more than a total of 12 fluid ounces per 1000 sq. ft. per crop.

#### LEAFY VEGETABLES

For use on Celery, Dandelion, Endive, Lettuce (head and leaf), Parsley, Spinach, and Swiss chard to control Flea beetles, Harlequin bugs, and Leafhoppers, apply 3/4 to 1 1/2 fluid ounces of this product per gallon of water to cover 1000 sq. ft. **OR** for use on Celery, Dandelion, Endive, Lettuce (head and leaf), Parsley, Spinach, and Swiss Chard to control Armyworm, Aster leafhopper, Fall armyworm, Imported cabbageworm, Lygus bugs, Spittlebugs, Stink bugs, and Tarnished plant bug, apply 1 1/2 to 3 fluid ounces of this product per gallon of water to cover 1000 sq. ft. using the following **SPECIFIC DIRECTIONS:** Repeat applications as necessary up to a total of 5 times but not more than once every 7 days.

**RESTRICTIONS AND PRECAUTIONS:** Do not apply within 14 days of harvest. Do not apply more than a total of 9 fluid ounces per 1000 sq. ft. per crop.

#### LEGUME VEGETABLES

For use on Fresh and Dried Beans (Phaseolus species including snap, navy, and kidney), Fresh and Dried Peas (Pisum species), Lentils, Cowpeas, and Southern Peas; (DO NOT USE ON LENTILS IN CALIFORNIA), to control Bean leaf beetle, Blister beetle, Cucumber beetles, Grape colaspis, Green cloverworm, Japanese beetle, Mexican bean beetle, and Velvetbean caterpillar, apply 3/4 to 1 1/2 fluid ounces of this product per gallon of water to cover 1000 sq. ft. **OR** to control Corn earworm, apply 3/4 to 2 1/4 fluid ounces of this product per gallon of water to cover 1000 sq. ft. **OR** to control Alfalfa caterpillar, Colorado potato beetle, Flea beetles, Leafhoppers, Three cornered alfalfa hopper, Thrips and Western

#### BRASSICA LEAFY VEGETABLES CROPS

For use on Broccoli, Brussel Sprouts, Cauliflower, Cabbage, Chinese Cabbage, Collards, Kale, Kohlrabi, and Mustard Greens to control Flea beetles, Harlequin bugs, and Leafhoppers, apply 3/4 to 1 1/2 fluid ounces of this product per gallon of water to cover 1000 sq. ft. **OR** Armyworm, Aster leafhopper, Corn earworm, Diamondback moth, Fall armyworm, Imported cabbageworm, Lygus bug, Spittle bugs, Stink bugs, and Tarnished plant bug apply 1 1/2 to 3 fluid ounces of this product per gallon of water to cover 1000 sq. ft. using the following **SPECIFIC DIRECTIONS:** Repeat applications as needed up to a total of 4 times but not more than once every 7 days.

**RESTRICTIONS AND PRECAUTIONS:** For Broccoli, Brussel Sprouts, Cabbage Cauliflower, and Kohlrabi, do not apply within 3 days of harvest. For Chinese Cabbage, Collards, Kale, and Mustard Greens, do not apply within 14 days of harvest. Do not apply more than a total of 9 fluid ounces per 1000 sq. ft. per crop.

#### SWEET CORN

For use on sweet corn to control Armyworm, Chinch bugs, Corn earworm, Corn rootworm adults, Fall armyworm, Flea beetles, Japanese beetles, Sap beetles, Southwestern corn borer, and Leafhoppers, apply 1 1/2 to 3 fluid ounces of this product per gallon of water to cover 1000 sq. ft. **OR** to control European corn borer, apply 2 1/4 to 3 fluid ounces of this product per gallon of water to cover 1000 sq. ft. **OR** to control Western bean cutworm and Cutworms, apply 3 fluid ounces of this product per gallon of water to cover 1000 sq. ft. using the following **SPECIFIC DIRECTIONS:** OBSERVE BEE CAUTION. Repeat applications as necessary up to a total of 8 times but not more often than once every 7 days. Optimum timing and good coverage are essential for effective control. For insects attacking silks and ears, insecticide sprays should be applied starting when first silks appear and continuing until silks begin to dry. During silking, the minimum retreatment interval (7 days) may not provide adequate levels of protection under conditions of rapid growth or severe pest pressure.

**RESTRICTIONS AND PRECAUTIONS:** Do not apply within 2 days of harvest of ears or within 14 days of harvest or grazing of forage or within 48 days of harvest of fodder. Do not apply more than a total of 24 fluid ounces per 1000 sq. ft. per crop

#### CUCURBIT VEGETABLES

For use on Cucumbers, Melons, Pumpkins, and Squash to control Pickleworm and Melonworm, apply 3/4 to 1 1/2 fluid ounces of this product per gallon of water to cover 1000 sq. ft. **OR** to control Cucumber beetles, Flea beetles, Leafhoppers and Squash bugs, apply 1 1/2 fluid ounces of this product per gallon of water to cover 1000 sq. ft. using the following **SPECIFIC DIRECTIONS:** Repeat applications as necessary up to a total of 6 times but not more often than once every 7 days. For optimum control of squash bugs, apply sufficient spray volume for thorough coverage and time sprays for early morning or late afternoon.

water to cover 1000 sq. ft. **OR** to control Armyworm, Cutworms, European corn borer, Fall armyworm, Stink bugs, Tarnished plant bug, and Webworms, apply 1 1/2 to 2 1/4 fluid ounces of this product per gallon of water to cover 1000 sq. ft. **OR** to control Alfalfa looper (suppression), Cowpea curculio (suppression), Painted lady (Thistle caterpillar), Pea leaf weevil, Pea weevil, Saltmarsh caterpillar, Woollybean caterpillar, and Yellowstriped armyworm, apply 2 1/4 fluid ounces of this product per gallon of water to cover 1000 sq. ft. **OR California Only:** Corn earworm (suppression), Limbean podborer (suppression), Lygus bugs (suppression), and Stink bugs (suppression), apply 2 1/4 fluid ounces of this product per gallon of water to cover 1000 sq. ft. using the following **SPECIFIC DIRECTIONS:** Repeat applications as necessary up to a total of 4 times but not more than once every 7 days. For cutworm control, this product is most effective against species which feed on the upper portions of the plant. Use lower rates for light to moderate populations and smaller instars and to provide maximum survival of beneficial insects and spiders. Use the higher rates for heavy populations and larger instars.

**RESTRICTIONS AND PRECAUTIONS:** Do not apply within 14 days of grazing or harvest for forage or within 3 days of harvest of fresh beans or peas or within 21 days of harvest of dried beans or peas, seed, or hay. Do not apply more than a total of 9 fluid ounces per 1000 sq. ft. per crop. Observe plant response precautions.

#### ROOT AND TUBER CROPS: ROOT AND TUBER CROPS EXCEPT SUGAR BEETS & SWEET POTATOES

For use on Garden Beets, Carrots, Horseradish, Parsnips, Radishes, Rutabagas, Salsify, and Potatoes to control Flea beetles and Leafhoppers, apply 3/4 to 1 1/2 fluid ounces of this product per gallon of water to cover 1000 sq. ft. **OR** to control Armyworm, Aster leafhopper, Colorado potato beetle, Corn earworm, Cutworms, European corn borer, Fall armyworm, Lace bugs, Lygus bugs, Spittlebugs, Stink bugs, and Tarnished plant bug, apply 1 1/2 to 3 fluid ounces of this product per gallon of water to cover 1000 sq. ft. using the following **SPECIFIC DIRECTIONS:** Repeat applications as necessary up to a total of 6 times but not more often than once every 7 days. For cutworm control, this product is most effective against species which feed on the upper portions of the plant.

**RESTRICTIONS AND PRECAUTIONS:** Do not apply within 7 days of harvest. Do not apply more than a total of 9 fluid ounces per 1000 sq. ft. per crop.

#### SWEET POTATOES

For use on Sweet Potatoes to control Corn earworm, Cucumber beetles, Flea beetles, Sweet potato hornworm, Sweet potato weevil, Tortoise beetles, and Whitefingered beetle, apply 1 1/2 to 3 fluid ounces of this product per gallon of water to cover 1000 sq. ft. **OR** to control Yellowstriped armyworm, apply 3 fluid ounces of this product per gallon of water to cover 1000 sq. ft. using the following **SPECIFIC DIRECTIONS:** Preplant dip for control of sweet potato weevil: Just prior to planting, dip sweet potato cuttings in a suspension containing 4 gallons of this product in 100 gallons of water (5 2 fluid ounces of this product per gallon of water).

but not more often than once every 7 days.

**RESTRICTIONS AND PRECAUTIONS:** Do not apply within 7 days of harvest. Do not apply more than a total of 12 fluid ounces per 1000 sq. ft. per crop with in-season sprays. Do not apply more than a total of 3 3/5 fluid ounces per 1000 sq. ft. as a preplant dip treatment

#### SMALL FRUITS AND BERRIES

For use on Canberries, Blueberries, Cranberries, Grapes and Strawberries to control European fruit lecanium, European raspberry aphid, Flea beetles, Grape leafhopper, Grape leafroller, Japanese beetle, Leafhoppers, Leafrollers, Meadow spittlebug, Omnivorous leafhopper, Rose chafer, Snowy tree cricket, Strawberry bud weevil, Strawberry clipper, Strawberry fruitworm, Strawberry leafroller, Strawberry weevil, Western grapeleaf skeletonizer, and Western yellowstriped armyworm, apply 1 1/2 to 3 fluid ounces of this product per gallon of water to cover 1000 sq. ft. **OR** to control Blueberry maggot, Cherry fruitworm, Cranberry fireworm, Cranberry fruitworms, Cranberry twig girdler, Elm spanworm, Gypsy moth, Spaganothus worm, and Tarnished plant bug, apply 2 1/4 to 3 fluid ounces of this product per gallon of water to cover 1000 sq. ft. **OR** to control Eight-spotted forester, Cutworms, Grape berry moth, June beetles, Omnivorous leafroller, Orange tortix, Raspberry fruitworm, Raspberry sawfly, Redbanded leafroller, and Saltmarsh caterpillar, apply 3 fluid ounces of this product per gallon of water to cover 1000 sq. ft. using the following **SPECIFIC DIRECTIONS:** OBSERVE BEE CAUTION. Repeat applications as necessary up to a total of 5 times but not more often than once every 7 days. For cutworm control, this product is most effective against species which feed on the upper portions of the plant. In grapes for grape leafhopper control, apply before first brood larvae emerge from rolls. In grapes, do not concentrate spray on the bunch or visible residues may result.

**RESTRICTIONS AND PRECAUTIONS:** Do not apply within 7 days of harvest. Do not apply more than a total of 15 fluid ounces per 1000 sq. ft. per crop. **CAUTION:** Use in cranberries may kill shrimp and crabs. Do not use in areas where these are important resources. Carbaryl may injure Early Dawn and Sunrise varieties of strawberries.

#### TREE FRUIT CROPS

On all tree fruit crops, apply in sufficient volume for adequate coverage. This will vary depending on the pest and its severity, the tree condition, size, and density, and other factors.

#### CITRUS FRUITS

For use on Citrus Fruits to control Avocado leafroller, California orange-dog, Citrus cutworm, Fruittree leafroller, Orange tortix, and Western tussock moth, apply 3 to 4 1/2 fluid ounces of this product per gallon of water to cover 1000 sq. ft. using the following **SPECIFIC DIRECTIONS:** OBSERVE BEE CAUTION. Repeat applications as necessary up to a total of 8 times but not more often than once every 14 days **OR** to control Citrus rust mite, Eriophyid mites, Plant bugs, and Scale insects (Black scale, brown soft scale, California red scale [except in California], citrus snow scale, yellow scale [except in California]), apply 4 1/2 to 7 1/2 fluid

ounces of this product per gallon of water to cover 1000 sq. ft. **OR** to control Apopka weevil (adult), Citrus root weevils (adults), Fuller rose beetle, and Little leaf notcher (adult), apply 7 1/2 to 11 1/4 fluid ounces of this product per gallon of water to cover 1000 sq. ft. using the following **SPECIFIC DIRECTIONS:** For scale control, apply when crawlers are present. For best control of Eriophyid mites including citrus rust mite, apply when pest populations are low - **OR** (for use on California Only): California red scale and Yellow Scale, apply 7 1/2 to 24 fluid ounces of this product per gallon of water to cover 1000 sq. ft. using the following **SPECIFIC DIRECTIONS:** Do not make more than 1 application per crop for California red scale. Apply when crawlers are present.

**RESTRICTIONS AND PRECAUTIONS:** Do not apply within 5 days of harvest. Do not apply more than a total of 30 fluid ounces per 1000 sq. ft. per crop. For trees taller than 10 feet, consider hiring a licensed professional.

#### POME FRUITS

For use on Apples, Pears, Loquats, Crabapples, and Oriental Pears to control White apple leafhopper, apply 3/4 to 2 1/4 fluid ounces of this product per gallon of water to cover 1000 sq. ft. **OR** to control Apple aphid and Codling moth, apply 1 1/2 to 4 1/2 fluid ounces of this product per gallon of water to cover 1000 sq. ft. **OR** to control Apple aphid, Apple maggot, Apple mealybug, Apple rust mite, Bagworms, California pearslug (pear sawfly), European apple sawfly, Eyespotted bug moth, Fruittree leafroller, Gypsy moth, Japanese beetle, Lesser appleworm, Lygus bugs, Orange tortix, Pearleaf blister mite, Pear psylla, Pear rust mite, Periodical cicada, Plum curculio, Redbanded leafroller, Rosy apple aphid, Scale insects (Forbes scale, Lecanium scale, San Jose scale), Tarnished plant bug, Tentiform leafminers, Woolly apple aphid, and Yellowheaded fireworm, apply 2 1/4 to 4 1/2 fluid ounces of this product per gallon of water to cover 1000 sq. ft. using the following **SPECIFIC DIRECTIONS:** OBSERVE BEE CAUTION - On apples, avoid use during the period from full bloom until 30 days after full bloom unless fruit thinning is desired. Use for pest control during this period also may result in fruit removal. Repeat applications as necessary up to a total of 8 times per crop (including thinning sprays on apples) but not more often than once every 14 days. For psylla control, apply when eggs hatch or young nymphs are present. For scale control, apply when crawlers are present. **OR** for use on Apples Only - For Fruit Thinning, apply 1 1/2 to 4 1/2 fluid ounces of this product per gallon of water to cover 1000 sq. ft. using the following **SPECIFIC DIRECTIONS:** OBSERVE BEE CAUTION - For easily thinned varieties: apply 1/5 to 1/3 fluid ounces per 1000 sq. ft. For difficult to thin varieties: apply 1/3 to 2/3 fluid ounces per 1000 sq. ft. Apply between 10 and 25 days after full bloom. Factors such as tree age, variety, nutrition, previous crop, pruning, bloom and degree of set favor excessive fruit thinning with this product. Exercise caution to avoid possible yield reduction. Rates may vary depending on variety and local orchard conditions. Consult with your County Extension Service or other experts for advice on the proper use of this product.

**RESTRICTIONS AND PRECAUTIONS:** Do not apply within 3 days of harvest. Do not apply more than a total of 22 1/2 fluid ounces per

1000 sq. ft. per crop. Do not make more than a total of 8 applications per crop. For trees taller than 10 feet consider hiring a licensed professional.

#### STONE FRUITS

For use on Apricots, Cherries, Nectarines, Peaches, Plums and Prunes to control Apple pandemis, Black cherry aphid, Cherry fruitworm, Cherry maggot (Cherry fruit fly), Codling moth, Cucumber beetles, Eastern tent caterpillar, Eyespotted bug moth, European earwig, Fruittree leafroller, Green fruitworm, Gypsy moth, Japanese beetle, June beetle, Lesser peachtree borer, Mealy plum aphid, Orange tortix, Oriental fruit moth, Peach twig borer, Periodical cicada, Plum curculio, Prune leafhopper, Redbanded leafroller, Rose chafer, Scale insects (Brown soft scale, Forbes scale, Lecanium scale, Olive scale, Oystershell scale, San Jose scale), Tarnished plant bug, Tussock moth, and Variegated leafroller, apply 3 to 4 1/2 fluid ounces of this product per gallon of water to cover 1000 sq. ft. **OR** (for California Only): Black cherry aphid, Cherry fruitworm, Cherry maggot (Cherry fruit fly), Codling moth, Cucumber beetles, Eyespotted bug moth, European earwig, Fruittree leafroller, Green fruitworm, Mealy plum aphid, Orange tortix, Oriental fruit moth, Peach twig borer, Scale insects (Brown soft scale, Forbes scale, Lecanium scale, Olive scale, Oystershell scale, San Jose scale), Tarnished plant bug, and Tussock moth, apply 4 1/2 to 6 fluid ounces per gallon of water to cover 1000 sq. ft. using the following **SPECIFIC DIRECTIONS:** OBSERVE BEE CAUTION. Repeat applications as necessary up to a total of 3 times per crop but not more often than once every 14 days. An additional application at the dormant or delayed dormant timing may be made. For optimum scale control, apply when crawlers are present. **OR** to control Peach twig borer, Scale insects (Brown soft scale, Forbes scale, Lecanium scale, Olive scale, Oystershell scale, San Jose scale), apply 6 to 7 1/2 fluid ounces of this product per gallon of water to cover 1000 sq. ft. using the following **SPECIFIC DIRECTIONS:** For dormant or delayed dormant timing, apply in combination with a recommended dormant oil. Refer to the dormant oil product label for additional use directions and restrictions.

**RESTRICTIONS AND PRECAUTIONS:** Do not apply within 3 days of harvest, except in California. In California, do not apply within 1 day of harvest. Do not apply more than a total of 21 fluid ounces per 1000 sq. ft. per crop. Do not apply more than a total of 7 1/2 fluid ounces per 1000 sq. ft. at the dormant or delayed dormant timing. Do not apply more than a total of 13 1/2 fluid ounces per 1000 sq. ft. during the production season. For trees taller than 10 feet, consider hiring a licensed professional.

#### TREE NUT CROPS

On all tree nut crops, apply in sufficient volume for adequate coverage. This will vary depending on the pest and its severity, the tree condition, size, and density, and other factors.

#### TREE NUTS

For use on Almonds, Chestnuts, Filberts, Pecans, and Walnuts to control Black margined aphid, Calico scale, Codling moth, European fruit lecanium, Fall webworm, Filbert aphid, Filbert leafroller, Filbertworm, Frosted

orangeworm, Peach twig borer, Pecan leaf phylloxera, Pecan stem phylloxera, Pecan nut casebearer, Pecan spittlebug, Pecan weevil, San Jose scale, Twig girdler, and Walnut caterpillar apply 3 to 7 1/2 fluid ounces of this product per gallon of water to cover 1000 sq. ft. using the following **SPECIFIC DIRECTIONS:** OBSERVE BEE CAUTION. Repeat applications as necessary up to a total of 4 times per crop (except at the dormant or delayed dormant timing) but not more often than once every 7 days. Use lower rates for pests attacking leaves. Use higher rates for pests attacking fruit and for higher infestations. For scale control, apply when crawlers are present. For peach twig borer, best results with foliar applications have been found by making applications in "popcorn" or petal fall stages when the May brood begins to hatch. For navel orangeworm in almonds and walnuts, best results have been found by timing early and midseason applications to correspond with moth flight peaks. For filbert leafroller, best results have been found by making applications when eggs are hatching, repeating application on first appearance of moths and again 3 to 4 weeks later. For codling moth in walnuts, best results have been found by making applications when average cross-sectional diameters of developing nuts are 0.5 to 0.75 inches and again during middle or late June as needed. **OR** to control Chestnut weevil and European earwig, apply 6 to 7 1/2 fluid ounces of this product per gallon of water to cover 1000 sq. ft. using the following **SPECIFIC DIRECTIONS:** For chestnut weevil, best results have been found with 4 applications at weekly intervals beginning in late July. The last application should be made prior to shuck split. For European earwig, thorough coverage of trunks, branches, and nuts is needed for best results. For use on Almonds ONLY, to control Peach Twig Borer and Scale insects apply 6 to 7 1/2 fluid ounces of this product per gallon of water to cover 1000 sq. ft. using the following **SPECIFIC DIRECTIONS:** For dormant or delayed dormant timing, apply in combination with a recommended dormant oil. Refer to the dormant oil product label for additional use directions and restrictions.

**RESTRICTIONS AND PRECAUTIONS:** Do not apply within 14 days of harvest. Do not apply more than a total of 22 1/2 fluid ounces per 1000 sq. ft. per crop, including any application at the dormant or delayed dormant timing. For trees taller than 10 feet, consider hiring a licensed professional.

#### TREES AND ORNAMENTALS

Apply in sufficient volume for adequate coverage. This will vary depending on the plant or tree size, density, and stage of growth.

For use on Roses, Flowers, Other Herbaceous Plants, Woody Plants and Shrubs to control Ants, Apple aphid, Armyworm, Ash whitefly, Azalea leafminer, Bagworms, Balsam twig aphid, Birch leafminer, Blister beetle, Boxelder bug, Boxwood leafminer, Brown tail moth, Cankerworms, Catalpa sphinx, Chiggers, Cooley spruce gall adelgid, Cutworms, Cypress tip moth, Douglas-fir tussock moth, Eastern spruce gall adelgid, Elm leaf aphid, Elm leaf beetle, Elm spanworm, Eriophyid mites, European pine shoot moth, Fall armyworm, Flea beetle, Furciferus gall mite,

budworm, Japanese beetle, Jeffrey pine needleminer, June bugs, Lace bugs, Leafhoppers, Leafrollers, Locust borer, Maple leafcutter, Mealy bugs, Mimosa webworm, Nantucket pine tip moth, Oak leafminers, Oak moth, Oak skeletonizer, Oakworm complex, Oleander caterpillar, Olive ash borer, Orange-striped oakworm, Periodical cicada, Pine looper, Pine sawfly, Pine spittlebug, Pitch pine tip moth, Plant bugs, Poinsettia hornworm, Psyllids, Puss caterpillar, Redhumped oakworm, Rose aphid, Rose chafer, Rose slug, Saddle prominent, Sawflies (exposed), Scale insects (crawlers), Sowbugs, Spiney elm caterpillar, Springtails, Spruce budworm, Spruce needleminer, Subtropical pine tip moth, Tent caterpillars, Thorn bug, Thrips (exposed), Ticks, Walnut caterpillar, Webworms, Western hemlock looper, Western spruce budworm, Willow leaf beetles, Woolly gall aphid, and Yellow poplar weevil using 1 1/2 fluid ounces of this product per gallon of water to cover 1000 sq. ft. **OR** for control of Gypsy Moth apply 1 to 1/2 fluid ounces of this product per gallon of water to cover 1000 sq. ft. using the following **SPECIFIC DIRECTIONS**: Observe plant response precautions. Obtain thorough coverage of upper and lower leaf surfaces. The addition of a sticker may improve residual control. To control scale insects, treat trunks, stems, and twigs in addition to plant foliage. For optimum worm control, treat when pests are small. Do not use on syrup-producing sugar maples where sap is harvested. Applications for control of maple leafcutters on sugar maple should be made when larvae are in 2nd instar after mining and as cases are being formed. Repeat treatments as necessary up to a total of 6 times per year but not more often than once every 7 days. For gypsy moth control, use the higher rate for heavy infestations.

**RESTRICTIONS AND PRECAUTIONS**: Do not make more than a total of 6 foliar treatments per year. **DO NOT ALLOW PUBLIC USE OF TREATED AREAS DURING APPLICATIONS OR UNTIL SPRAYS HAVE DRIED**. For trees taller than 10 feet, consider hiring a licensed professional.

#### **TURFGRASS**

Apply the recommended rates using pressure-type equipment in sufficient spray volume for thorough coverage and thatch penetration.

For use on Domestic lawns and Recreational areas to control Ants, Armyworms, Centipedes, Chiggers, Cutworms, Earwigs, Essex skipper, European chafer, Fall armyworm, Fiery skipper, Grasshoppers, Green june beetle larvae, Leafhoppers, Lucerne moth, Millipedes, Mosquitoes (adults), Scarab beetle adults (May beetle, June beetle, Japanese beetle, Green june beetle), Sowbugs, Spittlebugs, Springtails, Ticks and Yellowstriped armyworm, apply 3 to 6 fluid ounces of this product per gallon of water to cover 1000 sq. ft. using the following **SPECIFIC DIRECTIONS**: For armyworm, cutworm and fall armyworm control: Do not irrigate treated areas within 24 hours following insecticide application. For green june beetle grub (larvae) control: Make applications when grubs are feeding near the soil surface. Water or irrigate turfgrass soon after treatment. Repeat applications as necessary up to a total of 4 times per year but not more often than once every 7 days. **OR** to control Chinch bugs, and Sod webworms (lawn moths), apply 12 to 16 fluid ounces of this product per gallon of water to cover 1000 sq. ft. **OR** to control Bluegrass billbug larvae, European

crane fly, Fleas, White grubs (Japanese beetle, Chafer beetle, and Phyllophaga spp. larvae), Black turfgrass atanius beetle larvae, and Hyperoides weevil (bluegrass weevil) larvae, apply 12 fluid ounces of this product per gallon of water to cover 1000 sq. ft. using the following **SPECIFIC DIRECTIONS**: For chinch bug control: Treat entire grass area rather than just damaged areas. Irrigation prior to treatment will aid in penetration of insecticide into turfgrass. Do not irrigate treated areas within 24 hours following insecticide application. For European crane fly control: Treatment should be applied in early spring, April 1 to April 15, or as recommended by local Agricultural Extension Service agents. Water or irrigate turfgrass soon after treatment. For White Grub Control: Applications should be made when grubs are feeding near the soil surfaces, usually during late March through May, or July through early September, or as recommended by local Agricultural Extension Service agents. Water or irrigate turfgrass soon after treatment. Repeat applications as necessary up to 2 times per year but not more often than once every 7 days.

**RESTRICTIONS AND PRECAUTIONS**: **DO NOT ALLOW PUBLIC USE OF TREATED AREAS DURING APPLICATIONS OR UNTIL SPRAYS HAVE DRIED**.

### **CONTROL OF SPECIFIC PESTS ACROSS MULTIPLE SITES**

#### **GRASSHOPPERS**

For use on all crops and sites on this label to control Grasshoppers, apply 3/4 to 2 1/4 fluid ounces of this product per gallon of water to cover 1000 sq. ft. using the following **SPECIFIC DIRECTIONS**: Apply 3/4 to 1 1/8 fluid ounces per 1000 sq. ft. of this product for nymphs on small plants or sparse vegetation. Apply 1 1/2 to 2 1/4 fluid ounces per 1000 sq. ft. for mature grasshoppers or applications to dense foliage or if extended residual control is desired. Be certain spray volumes are appropriate to assure adequate coverage.

**RESTRICTIONS AND PRECAUTIONS**: **\*NOTE**: Refer to individual site listings elsewhere on this label for use limitations and restrictions. Do not use rates higher than listed for the site or exceed other use restrictions.

#### **CONTROL OF TICKS WHICH VECTOR LYME DISEASE**

For control of juvenile and adult ticks which vector Lyme Disease, apply the recommended amount is sufficient volume for thorough coverage.

For use on all crops and sites on this label to control Ixodes spp. (Deer tick, Bear tick, Black legged tick) and Amblyomma spp. (Lone star tick) apply 1 1/2 to 3 fluid ounces of this product per gallon of water to cover 1000 sq. ft. using the following **SPECIFIC DIRECTIONS**: Use the high rate for heavy tick infestations. Use higher spray volumes for dense ground cover or heavy leaf litter. Target applications for nymphal control in late spring or early summer. Control of adult tick can be obtained with late summer and fall applications. Do not use spot treatments. Treat entire area and perimeter areas where exposure to ticks may occur. Ticks may be reintroduced from surrounding areas on host animals. Retreat as necessary to maintain adequate control levels.\*

**RESTRICTIONS AND PRECAUTIONS**: **\*NOTE**: Refer to individual site listings elsewhere on this label for use limitations and restrictions. Do not use rates higher than listed for the site or exceed other use restrictions. **DO NOT ALLOW PUBLIC USE OF TREATED AREAS DURING APPLICATION OR UNTIL SPRAYS HAVE DRIED**.

#### **IMPORTED FIRE ANTS**

For use as a **Drench Application** on all crops and sites on this label to control imported fire ants, apply 3/4 fluid ounces of this product per gallon of water using the following **SPECIFIC DIRECTIONS**: Apply a total of 2 gallons of the diluted solution over the surface of each mound or at least 1 quart per 6 inches of mound diameter using a bucket, can or other appropriate equipment. Thoroughly wet mound and surrounding areas to a 4 ft. diameter (12 sq. ft.). Do not disturb mound prior to treatment. Pour solution from a height of about three feet to give sufficient force to break mound apex and flow into ant tunnels. For best results apply in cool weather (65 - 80°F) or in early morning or late evening hours. Repeat application if mound activity resumes after 7 days. Treat new mounds as they appear. Pressurized sprays may disturb the ants and cause migration, reducing product effectiveness. **OR** for use as a **Foliar Application**, apply 1 1/2 fluid ounces (approximately 3 tablespoons) of this product per gallon of water using the following **SPECIFIC DIRECTIONS**: Avoid contact with foliage and treat only the growing media when using on bedding plants. Do not make more than one application, either as a root dip or drench treatments (applied to the point of saturation).

**RESTRICTIONS AND PRECAUTIONS**: **DO NOT ALLOW PUBLIC USE OF TREATED AREAS DURING APPLICATIONS OR UNTIL DRENCH HAS DRIED**. **DO NOT USE IN GREENHOUSES**. **\*NOTE**: **DO NOT USE ON ANY FOOD CROP NOT LISTED ON THIS LABEL**. Refer to the specific crop section for additional restrictions and precautions.

#### **ADULT MOSQUITO CONTROL**

Apply in sufficient gallonage for thorough coverage.

For use on all crops and sites on this label to control Mosquitoes (adults), apply 3/8 to 1 1/2 ounces of this product per gallon of water to cover 1000 sq. ft. using the following **SPECIFIC DIRECTIONS**: **OBSERVE BEE CAUTION**. Treat shrubbery and areas where adult mosquitoes congregate. Treat when adult mosquitoes are active in early mornings or late evenings. Repeat applications as necessary.\*

**RESTRICTIONS AND PRECAUTIONS**: **DO NOT ALLOW PUBLIC USE OF TREATED AREAS DURING APPLICATION OR UNTIL SPRAYS HAVE DRIED**. **CAUTION**: May kill shrimp and crabs. Do not use in areas where these are important resources. **\*NOTE**: Refer to individual site listings elsewhere on this label for use limitations and restrictions. Do not use rates higher than listed for the site or exceed other use restrictions. To prepare small volumes of spray mixture, use 1/2 fl. oz. (approximately 4 teaspoons) of this product in an adequate amount of water and apply to 500 sq. ft. where rates of 1 1/2 fluid ounces per 1000 sq. ft. are indicated.

#### **NUISANCE PEST CONTROL**

For use as a perimeter treatment to prevent infestations of buildings, apply the specified dosage in a band 6 to 10 feet wide around the outside perimeter of the structure.

For use on Ants, Bees, Brown dog tick, Centipedes, Cockroaches, Crickets, Darkling beetle (lesser mealworm or litter beetle), Earwigs, Firebrats, Fleas, Millipedes, Scorpions, Silverfish, Spiders, and Wasps, apply 5 fluid ounces of this product per gallon using the following **SPECIFIC DIRECTIONS**: Observe plant response precautions. Apply as a coarse wet spray in a bank 6 to 10 feet wide around the outside perimeter of buildings. Confine applications to areas immediately adjacent to the building. Direct application to the structure should be minimal and restricted to cracks, crevices, and areas where insects tend to congregate. For use in and around flower beds and ornamental plantings, apply as a coarse wet spray in and around plant beds. May be applied to outdoor sleeping quarters of pets. Do not treat animals. Do not allow animals to use treated area until sprays have dried.

**RESTRICTIONS AND PRECAUTIONS**: **DO NOT ALLOW PUBLIC USE OF TREATED AREAS DURING APPLICATIONS OR UNTIL SPRAYS HAVE DRIED**. **NOTE**: Staining may occur on certain surfaces such as stucco, brick, cinder block, wood, fabrics, and carpet. Spray deposits on painted or stained surfaces of finishes (i.e., cars, house trailers, boats, etc.) should be removed immediately by washing to prevent discoloration. Avoid application to surfaces where visible spray residues are objectionable. Staining of fabrics and carpet may be permanent.

#### **WARRANTY AND DISCLAIMER**

TechPac, LLC. guarantees this product to the extent of the purchase prices, only when used according to label directions.

For Material Safety Data Sheet: Call 888-673-7577

Sevin® is a registered trademark of Rhône-Poulenc.

Garden Tech® is a registered trademark of Gulfstream Home & Garden, Inc.